

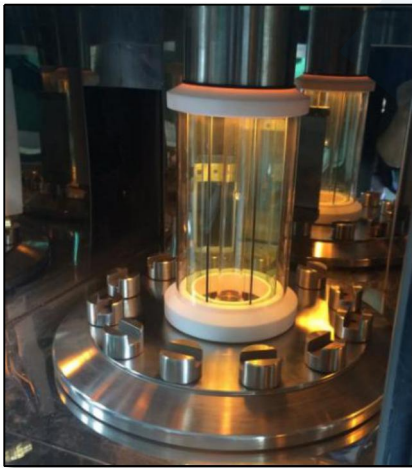
Product Presentation

Application

This machine apply to light color fastness, anti-climate color fastness, light & perspiration color fastness and light aging tests of textile, paint, dye, coating, rubber, plastic, wood floor, paper and other materials, it have anti-climate functions of exposing to the rain, revolution and mist spraying.



Detail Pictures



Test Chamber



Specimen Holder



Solar Cell Panel



Mistorizer

Wood Floor



Fabrics



Sample Example

Feature

- The 2500W long arc xenon lamp is used to simulate the solar spectrum.
- High transmittance of filter combinations and use 95% of the transmittance filters and filter cartridges. With Low power consumption but achieve the same irradiation light requirements. To make the machine is more energy saving and environment friendly.
- Standard equipped with 420nm wave band, irradiance digital setting, real time monitoring, closed loop automatic regulation, providing the most stable irradiance test light source for different standards (340nm, 420nm, 300-400nm and 300-800nm band optional).
- Test and radio transmission are powered by using light conversion technology, no additional power supply is required.
- The sample is tested with black plate thermometer (BPT), black plate standard thermometer (BST), irradiance detector at the same position (in equidistance) to really indicate measuring state of the sample, the tested data is transmitted synchronously by using technology of radio frequency.
- With industrial temperature control (refrigeration) system for smoothly and fast adjusting temperature in test chamber
- With several modes of operation (spray, alternating light and dark, revolution), can simulate the real climate state.
- Individual timing of each sample clamp may enable different sample test in a same tester and facilitate test monitor and reduce operation cost.
- 7-inch color touch screen, various test monitor models(animation, figure and chart), simply operate, directly and clear.
- 1000 hours of continuous operations.
- Industrial grade microcontroller with strong antijamming capability.
- 12 working positions monitoring, can set and inquire the irradiation energy.
- The machine possess fault prompt functions and self-diagnostic function.

Standards

GB/T 8427, GB/T 8430, GB/T 14576, GB/T 15102, GB/T 15104, ISO 105-B02/B04, AATCC TM 16, ISO 12040, ASTM D5010, ASTM D4303, ISO 11341

Model	GT-D02A-1 Light Fastness Tester-Room Temperature(Air-Cooled)
Chamber Temperature	25-55°C; Resolution: 0.1°C
Chamber Humidity	Light Cycle: 10-70%RH; Resolution: 0.1RH% Dark Cycle: 30-95%RH; Resolution: 0.1RH%
BST	40-85°C; Accuracy: $\pm 1^\circ\text{C}$; Resolution: 0.1°C
BPT (Option)	40-80°C, Accuracy: $\pm 2^\circ\text{C}$; Resolution: 0.1°C
Time Control Range	$\leq 10000\text{h}$
Irradiance Control Range	0.80-1.20W/m ² @420nm (Option: 340nm, 420nm, 300-400nm or 280-800nm) Accuracy: $\pm 0.02\text{W/m}^2@420\text{nm}$.
	Digital setting, Closed-Loop Automatic Compensation
Xenon Arc Lamp Rated Power	2500W
Sample Holder Rotation Speed	2-7 rpm
Sample Holders Capacity	ISO: 145×45mm 12pcs Or AATCC: 145×70mm 6pcs
Timing of Each Sample Holder, Respectively	$\leq 10000\text{h}$
Light Period	$\leq 1000\text{h}$
Spray Period	$\leq 1000\text{h}$
Power	AC220V $\pm 10\%$ 50Hz 6.5KW .
Rated Power	3.3KW
Dimension	920×650×1680mm
Weight	180kg

Attachment

ITEM	Commodities	Model	Qty	Unit	Remarks
1	Main machine	GT-D02A-1	1	Set	
	Function: light, Spay, alternating light and dark, revolution.				
2	Sample clamps	145×45mm(ISO/ GB)	12	pcs	sample thickness is less than 8mm
3	Opaque disk	145×45mm	24	pcs	1/2, 1/3 each of 12pcs
4	Sample clamps	145×70mm(AATCC)	6	pcs	(Option Accessories)
5	Opaque disk	145×70mm	12	pcs	1/2,1/3 each of 6pcs (Option Accessories)
6	Sample board		60	pcs	
7	Lamp mount sealing ring		1	set	already on the main machine
8	Xenon lamp air cooled lamp holder		1	set	already on the main machine
9	Xenon arc lamp		2	pcs	one of them is standby application
10	BST		1	pcs	equipped on the main machine with irradiatometer
11	Glass filter cylinder		2	pcs	One of them is standby application
12	Light Filter		14	pcs	7 of them is standby application
13	Solar cell panel		1	pc	standby application
14	Blue wool sample		1	set	
15	Grey scale for color change		1	set	
16	Ceramic wafer		2	pcs	Shock piece in humidifier
17	PP cotton		2	pcs	One of them is standby application
18	Internal hexagonal wrench		1	pc	hexagon socket head cap screw
19	Protective tube		2	pcs	5A
20	Outlet &Inlet pipe		1	set	
21	Foot margin		4	pcs	